

VAG-COM (VCDS) Logging Guide

Safety

Safety is extremely important. Logging may involve high speeds so only do logs when it's safe to do so. The best place to take logs is on a dyno (rolling road), although many people do logs on public roads. We are not liable for anything that happens when you do logs!

General

- Most logs are done in 3rd gear Wide-Open-Throttle (WOT) from 2000 RPM (gas/petrol) or 1500 RPM (diesel) to redline.
- For cars equipped with automatic transmission, try forcing 3rd gear in "manual mode" if possible. WOT at low RPM can cause the transmission to downshift automatically. To stay in gear, apply only partial throttle at low RPM and then WOT at around 3000 RPM. With a little practice you can find what works best.

Groups (Measuring Blocks) to Log

Logging instructions are available in the following pages.

VAG 1.8T & 2.0T	<ul style="list-style-type: none"> • 003+115+020 • 003+118+031
VAG Non-Turbo Gas (Petrol)	<ul style="list-style-type: none"> • 003+020+031
VAG TDI 1996-2006	<ul style="list-style-type: none"> • 001 • 003 • 004 • 008 • 011 <p><i>log only one group at a time.</i></p> <p>With the engine turned off (leave the key "on"), log the following group for a few seconds to measure atmosphere pressure:</p> <ul style="list-style-type: none"> • 010 <p><i>we do take into account the altitude/elevation of each TDI we tune!</i></p>
VAG TDI 1996-2006 with aggressive tune or large turbo	<p>Log all the TDI groups listed above AND the following:</p> <p>WOT from approximately 40km/h (25mph) to 140km/h (90mph) starting in 3rd gear (you can shift into 4th during this run):</p> <ul style="list-style-type: none"> • 007+011+006 <p><i>before taking this log, cool down your intercooler by driving at very low engine load for several minutes. This includes cruising at a steady speed (preferably 3rd gear or higher) on level road or downhill.</i></p> <p>If you have a US-spec 2004-2005 Passat TDI, then please also log this group:</p> <ul style="list-style-type: none"> • 067
VAG TDI 1996-2006 with large turbo (e.g. VNT-20 on a 4 cylinder).	<p>Log all the TDI groups listed above AND the following:</p> <p>4th gear WOT from 1,250 RPM to redline. Take it 2-3 times. This log is very important for optimizing boost control in all driving conditions.</p> <ul style="list-style-type: none"> • 011

VAG TDI 2009+

Log only one group at a time:

- 001 • 003 • 004 • 008 • 011

Also log these groups in 4th gear:

- 001+011+099
- 001+004+099

Why take VAG-COM Logs?

Your vital engine data (such as boost, fuel quantity, timing, MAF, etc.) is recorded as you drive. They help us ensure that there are no problems with your engine before tuning, and to ensure that it is performing optimally after a tune. Although installing any tune without logging is possible (aka "tuning blindly"), using logs help bring the best out of your engine.

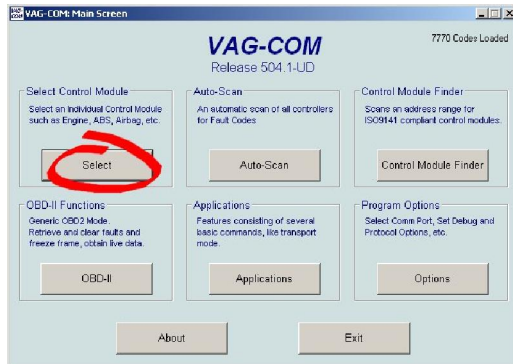
What do I need?

You need a VAG-COM cable or OBD2 logger and a laptop. Official VAG-COM cables can be purchased at <http://www.ross-tech.com>.

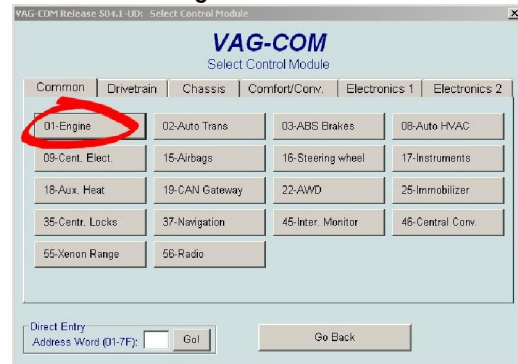
Step-by-Step Logging Guide

Ensure that the VAG-COM cable is connected to your car and your laptop. Open the VAG-COM software.

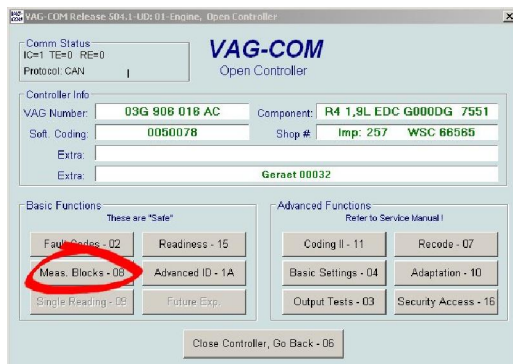
1. Click the **Select** button:



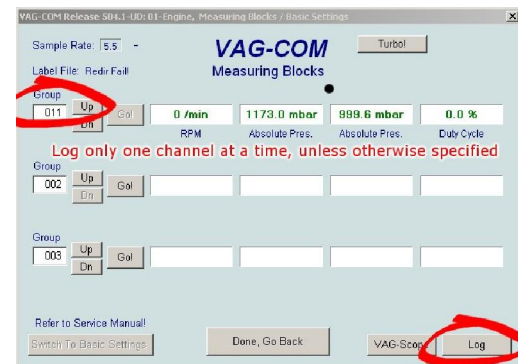
2. Click the **Engine** button:



3. Click the **Meas. Blocks** button:

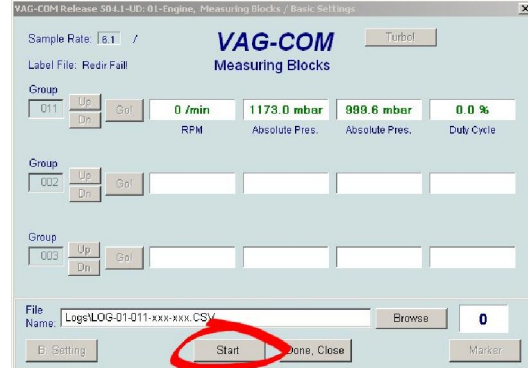


4. Select a group (or groups) to log. Refer to the list of groups near the top of this document.

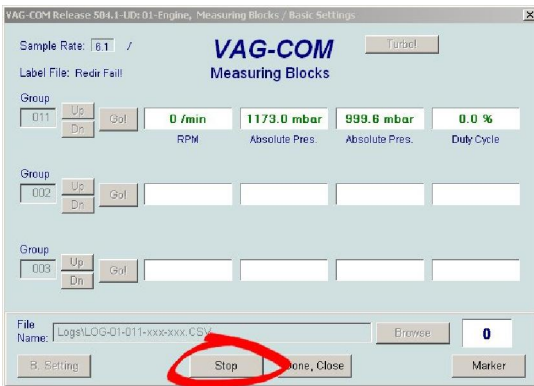


5. Click the **Log** button (shown in step 4, circled).

6. Click the **Start** button to begin logging:

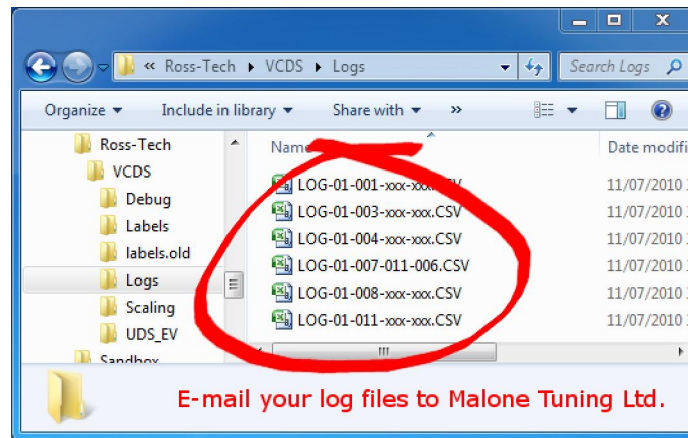


7. Click the **Stop** button at the end of your run:



8. Repeat steps #4-7 until you complete all groups.

After you complete logging you can find your log files in **C:\Ross-Tech\VCDS\Logs** or in **C:\Program Files\VAG-COM\Logs**:



Email the log files to Malone Tuning Ltd. for a free analysis.

Optional: Archive all log files into one ZIP or RAR file to make e-mail attachment easier.